

# Harrison Bayou and Goose Prairie Creek – Perchlorate Data

Surface water samples are collected quarterly from each location in Harrison Bayou and Goose Prairie Creek unless the creek sampling location is dry.

## Historic Surface Water Sample Data (in micrograms per liter)

Quarter	3 <sup>rd</sup>	4 <sup>th</sup>	1 <sup>st</sup>	2 <sup>nd</sup>	3 <sup>rd</sup>	4 <sup>th</sup>	1 <sup>st</sup>	2 <sup>nd</sup>	3 <sup>rd</sup>	4 <sup>th</sup>	1 <sup>st</sup>
Creek Sample ID	Jul 1999	Sep 1999	Feb 2000	Apr 2000	Aug 2000	Dec 2000	Feb 2001	Apr 2001	July 2001	Oct 2001	Jan 2002
GPW-1	<1.0U	-	4	<4.0 U	<4.0 U	<4.0 U	-	2.65	<4.0 U	<4.0 U	<4.0 U
GPW-3	<1.0U	<4.0 U	17	8	<4.0 U	<4.0 U	-	2.28	<4.0 U	<4.0 U	<4.0 U
HBW-1	-	<80.0 U	310	23	-	-	<4.0 U	-	<4.0 U	<4.0 U	<4.0 U
HBW-7	-	<8.0 U	370	110	-	-	<4.0 U	-	<4.0 U	<4.0 U	<4.0 U
HBW-10	-	<8.0 U	905	650	<4.0 U	-	<4.0 U	-	<4.0 U	-	-

Quarter	2 <sup>nd</sup>	3 <sup>rd</sup>	4 <sup>th</sup>	1 <sup>st</sup>	2 <sup>nd</sup>	3 <sup>rd</sup>	3 <sup>rd</sup>	4 <sup>th</sup>	2 <sup>nd</sup>	3 <sup>rd</sup>	4 <sup>th</sup>
Creek Sample ID	June 2002	Sept 2002	Dec 2002	Feb 2003	June 2003	Aug 2003	July 2004	Dec 2006	May 2007	Aug 2007	Dec 2007
GPW-1	<4.0 U	<4.0 U	18.3	18.6	59.9	-	2.25	-	<1.0 U	<1.0 U	10.7
GPW-3	<4.0 U	<4.0 U	5.49	12.6	14.7	-	2.2	-	<1.0 U	<1.0 U	7.48
HBW-1	<4.0 U	<4.0 U	<4.0 U	-	<4.0 U	99.3	<0.2U	<1.0 U	<1.0 U	122	<1.0 U
HBW-7	<4.0 U	<4.0 U	<4.0 U	-	<4.0 U	<4.0 U	<0.2U	<1.0 U	<1.0 U	1.02	<1.0 U
HBW-10	<4.0 U	<4.0 U	<4.0 U	-	<4.0 U	-	<0.2U	<1.0 U	<1.0 U	<1.0 U	<1.0 U

Quarter	1 <sup>st</sup>	2 <sup>nd</sup>	3 <sup>rd</sup>	4 <sup>th</sup>	2 <sup>nd</sup>	3 <sup>rd</sup>	3 <sup>rd</sup>	3 <sup>rd</sup>	4 <sup>th</sup>	1 <sup>st</sup>	2 <sup>nd</sup>
Creek Sample ID	Mar 2008	Jun 2008	Sep 2008	Dec 2008	May 2009	Jul 2009	Aug 2009	Sep 2009	Dec 2009	Mar 2010	Jun 2010
GPW-1	27	<0.5U	<0.5U	<0.22U	16	<4U	NS	<1.2U	3.7	1.3J	<0.6U
GPW-3	21.9	9.42	1.1	<0.22U	8.9	<4U	NS	<0.6U	2.8	1.8J	<0.6U
HBW-1	<0.5U	<0.5U	<0.5U	<0.22U	<0.55U	<4U	NS	<1.5U	<0.275U	1.5U	<0.6U
HBW-7	<0.5U	<0.5U	<0.5U	<0.22U	<0.55U	<4U	24	<1.2U	<0.275U	1.5U	<0.6U
HBW-10	<0.5U	<0.5U	<0.5U	<0.22U	<0.55U	<4U	NS	<1.5U	<0.275U	1.2U	<0.6U

Quarter	3 <sup>rd</sup>	4 <sup>th</sup>	1 <sup>st</sup>	2 <sup>nd</sup>	3 <sup>rd</sup>	4 <sup>th</sup>	1 <sup>st</sup>	2 <sup>nd</sup>	3 <sup>rd</sup>	4 <sup>th</sup>	1 <sup>st</sup>
Creek Sample ID	Sep 2010	Dec 2010	Mar 2011	Jun 2011	Sep 2011	Dec 2011	Mar 2012	Jun 2012	Not Applicable	Jan & Feb 2013	Mar 2013
GPW-1	dry	<0.1U	8.7	dry	dry	1.76	0.163J	dry	NC	1.65	0.735
GPW-3	dry	0.199J	0.673	dry	dry	1.31	0.261	dry	NC	1.74	0.754
HBW-1	dry	<0.1U	<0.2U	dry	dry	<0.1U	0.1U	dry	NC	<0.2U	<0.2U
HBW-7	dry	<0.1U	<0.2U	dry	dry	0.171J	0.1U	dry	NC	<0.2U	<0.2U
HBW-10	dry	<0.1U	<0.2U	dry	dry	<0.1U	0.1U	dry	NC	<0.2U	<0.2U

Quarter	2 <sup>nd</sup>	3 <sup>rd</sup>	4 <sup>th</sup>	1 <sup>st</sup>
Creek Sample ID	Jun 2013	Sept 2013	Dec 2013	Feb 2014
GPW-1	dry	<0.2 U	dry	0.766
GPW-3	dry	<0.2 U	dry	1.15
HBW-1	<0.2U	<0.2 U	dry	<0.2U
HBW-7	<0.2U	<0.2 U	dry	0.201J
HBW-10	<0.2U	<0.2 U	dry	<0.2U

Notes:

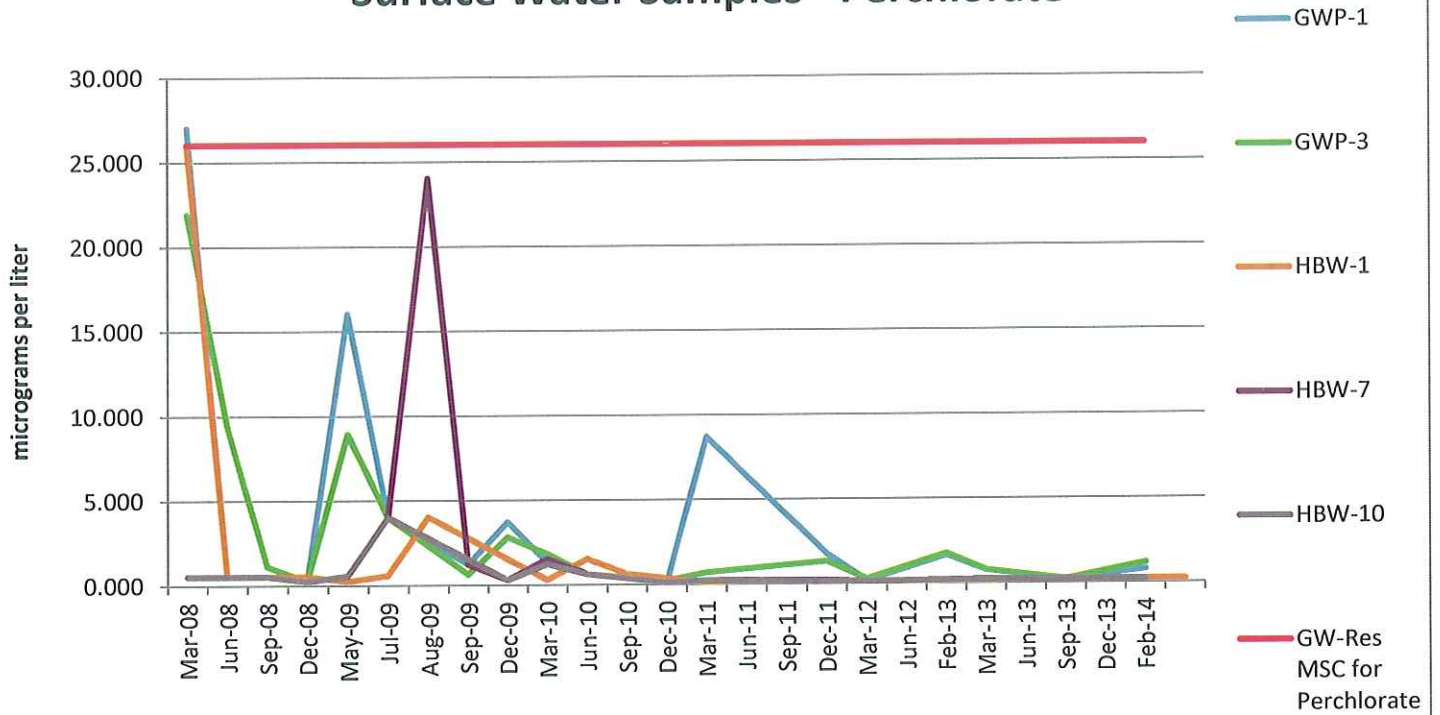
NC Not Collected

NS Not Sampled

dry Sampling location was dry

- No historical data available

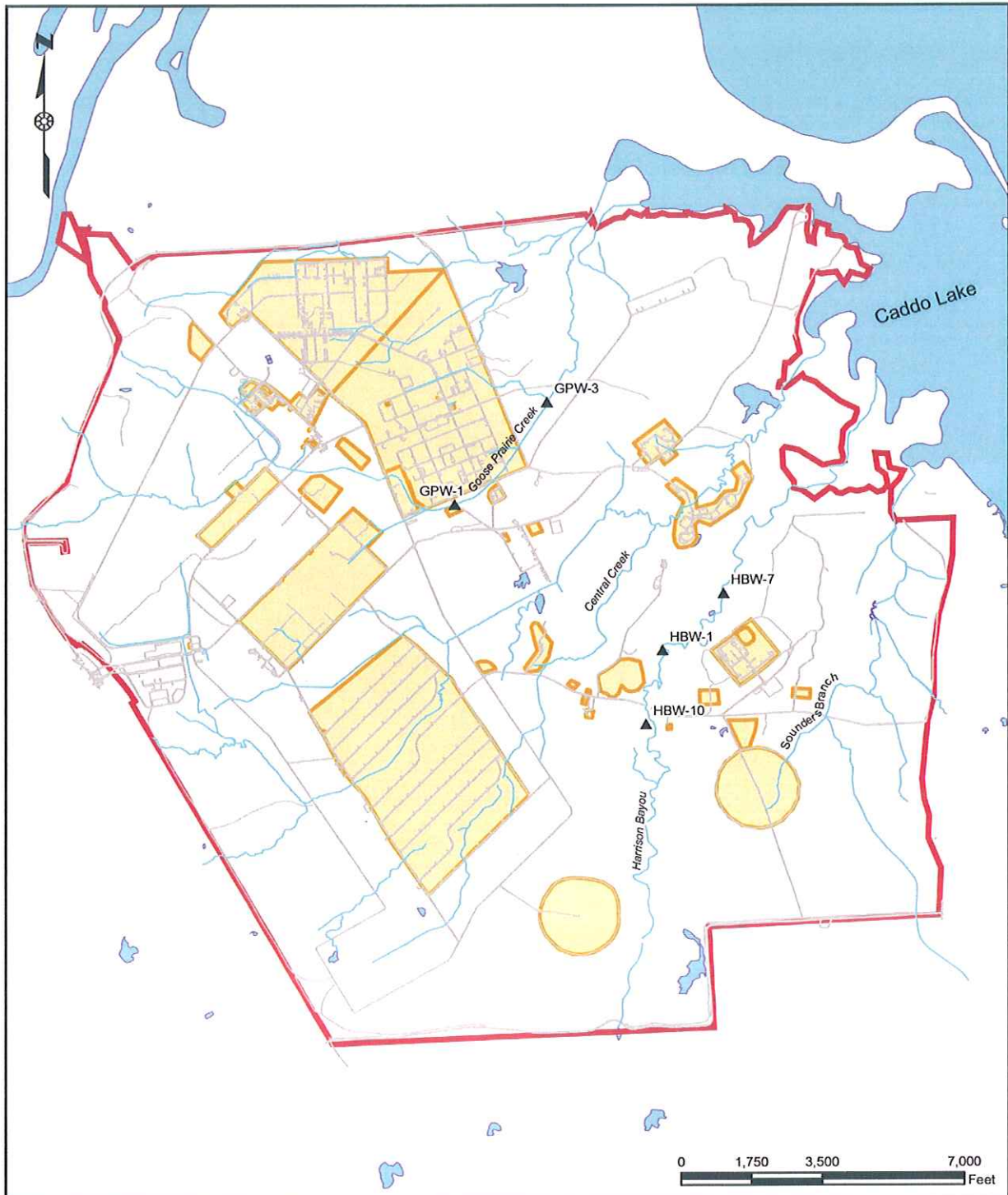
## Surface Water Samples - Perchlorate



Notes:

Perchlorate Screening Criteria - TCEQ GW<sub>ing</sub> (micrograms per liter) 51

**Longhorn Army Ammunition Plant Map with Creek Sampling Locations.**



**Legend**

- ▲ Surface Water Sampling Location
- Stream
- Road
- Site
- Lake

U.S. ARMY CORPS OF ENGINEERS  
TULSA DISTRICT  
TULSA, OKLAHOMA

**SURFACE WATER SAMPLING LOCATION**

LONGHORN ARMY AMMUNITION PLANT  
KARNACK, TEXAS

Photos of Goose Prarie Creek and Harrison Bayou sampling locations

