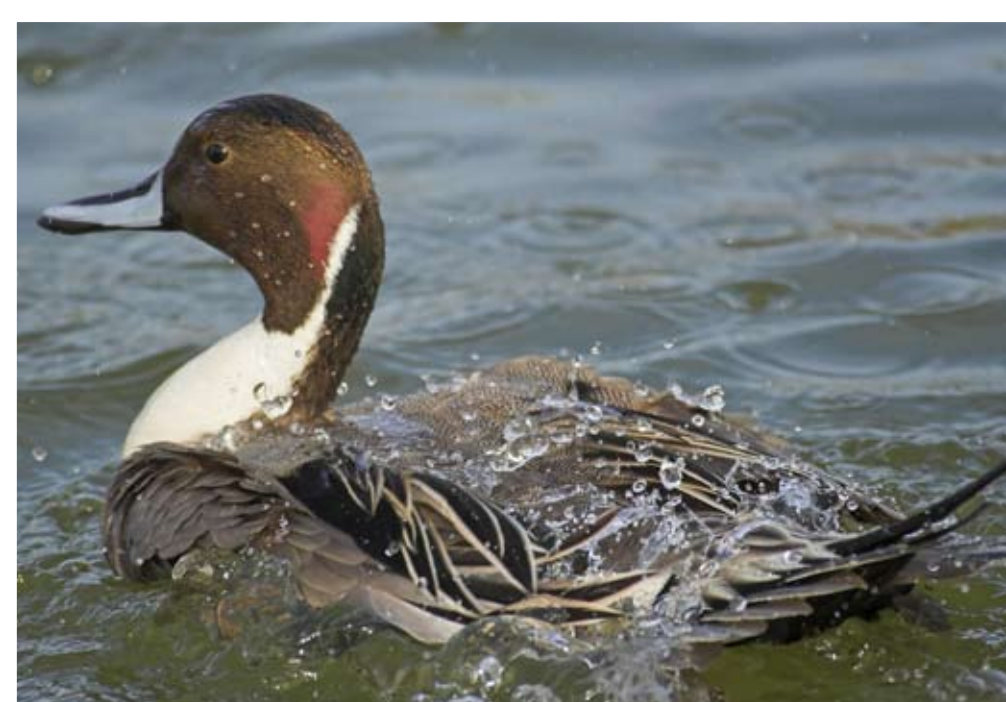


CATAHOULA LAKE, LOUISIANA

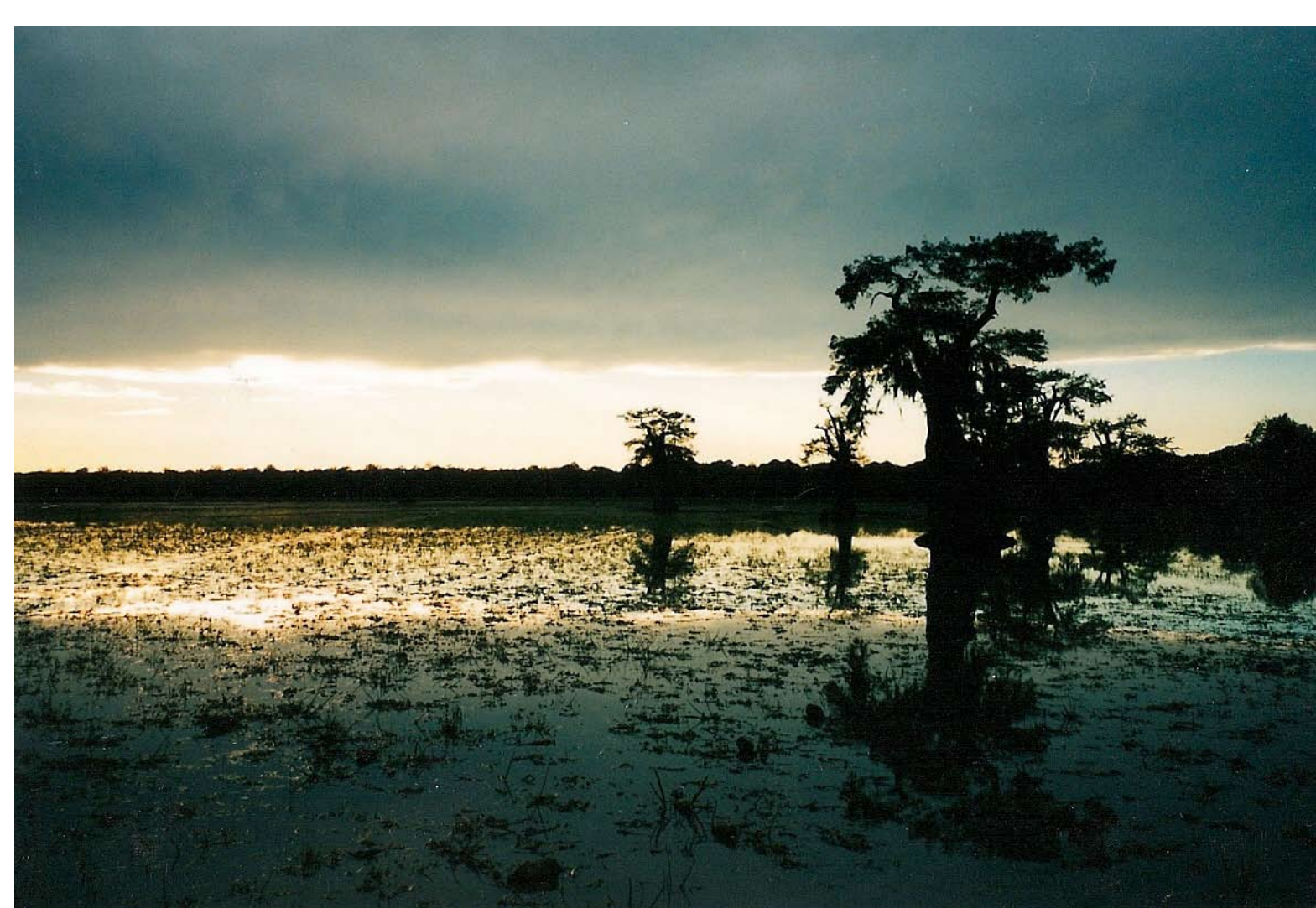
The nearest Ramsar site to Caddo Lake is Catahoula Lake, approximately 200 miles to the southeast, near Jena, Louisiana. This site was the 10th in the U.S. to be designated a Ramsar Wetland. The 26,000-acre lake is owned by the State of Louisiana, and fed by the Little River and numerous smaller water courses. It is Louisiana's largest natural freshwater lake and it provides habitat for hundreds of thousands of birds, with recorded peak duck populations of 75,000.

Pintail Duck

GLEN YOUNG - FOTALIA.COM



DAVID C. HAYDEN, LOUISIANA DEPARTMENT OF WILDLIFE AND FISHERIES



HUGE BATEMAN

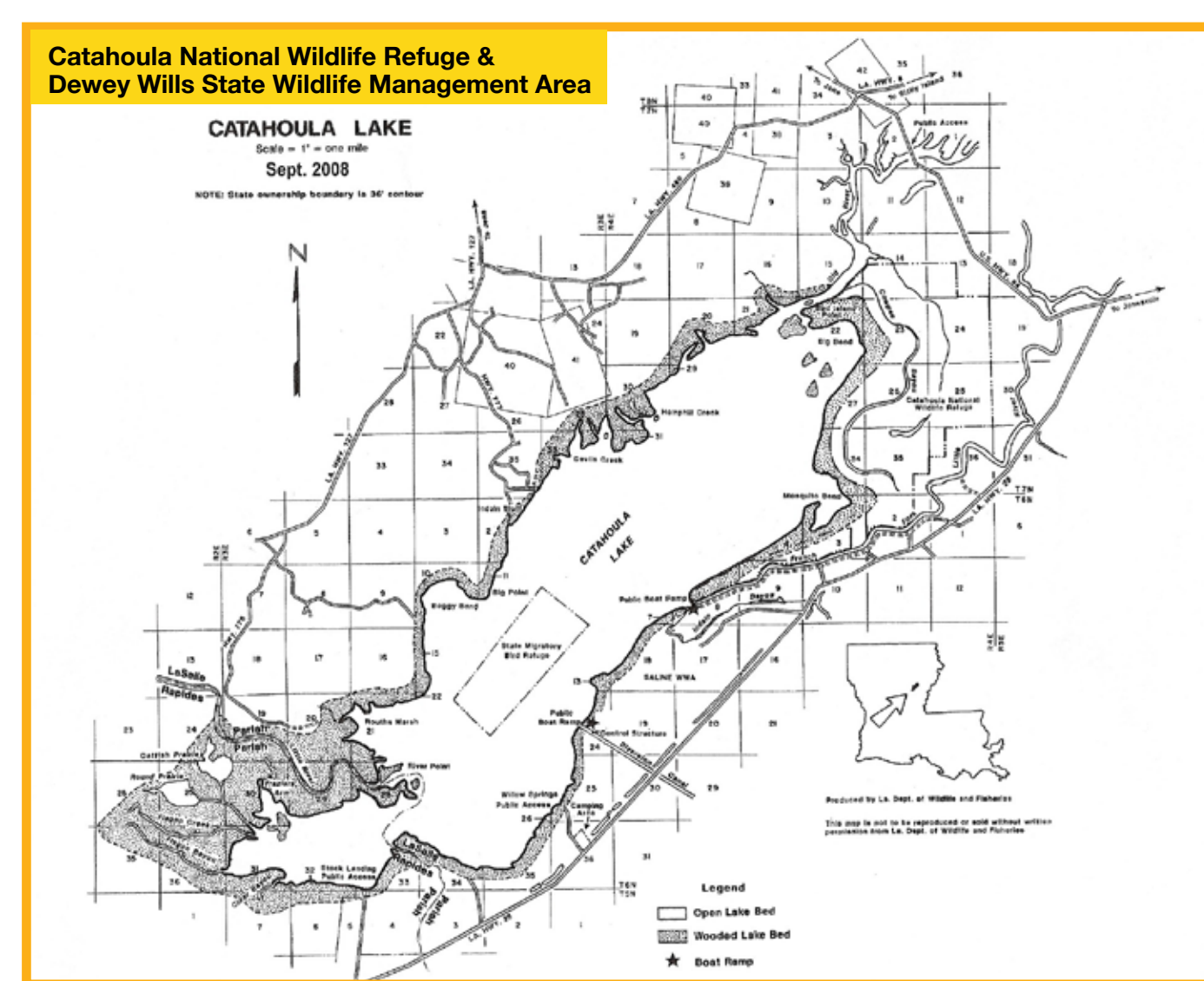
For more information, contact the Catahoula National Wildlife Refuge at (318) 992-5261 or the Dewey Wills State Wildlife Management Area at (318) 487-5885.



COSMA - FOTALIA.COM

MANAGED FOR FISH, WILDLIFE AND PUBLIC USE

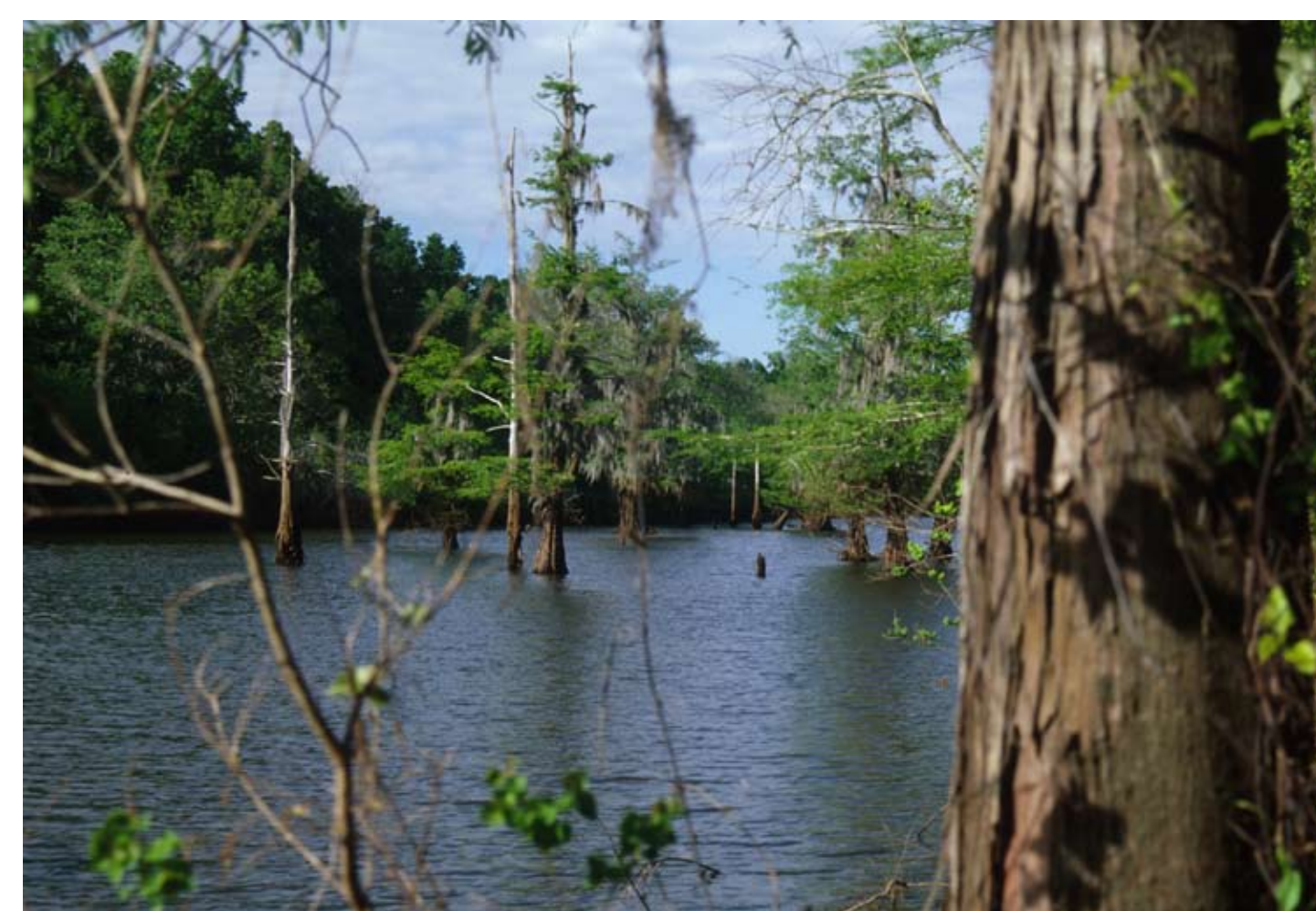
The Catahoula Lake area provides important opportunities for hunting, fishing, hiking, sight seeing, and bird watching. Water levels in the lake are carefully managed for the benefit of fish and wildlife and to encourage public use. For example, each year, 20,000 acres of the lake are dewatered in July to encourage the production of vegetation valuable to waterfowl. Ten to fifteen days before duck hunting season, the water level is raised two feet to provide habitat for ducks as well as hunting opportunities. After duck hunting season, the water level is raised another 4.5 feet to enhance commercial fishing.



COURTESY OF LOUISIANA DEPARTMENT OF WILDLIFE AND FISHERIES

ADJACENT PUBLIC LANDS

The area also includes the adjacent Catahoula National Wildlife Refuge and Dewey Wills State Wildlife Management Area. The refuge has 25,000 acres, much of which was acquired through a joint effort of the Conservation Fund, American Electric Power, and the Fish and Wildlife Service. The Wildlife Management Area covers almost 62,000 acres. These public lands are interlaced with a large number of bayous and lakes. They also include forests of bottomland hardwoods where over 200 species of birds can be found. Waterfowl, wading birds, raptors, and songbirds abound in the area.



AMERICAN ELECTRIC POWER